



	TECHNICAL CHARACTERISTICS	REFERENCE STANDARD	REQUIRED VALUE	AVG. VALUE	
	DIMENSIONS	ISO 10545-2	Compliant	Compliant	
	WATER ABSORPTION	ISO 10545-3	≤0,5 %	<0,1%	
	MODULUS OF RUPTURE	ISO 10545-4	MODULUS OF RUPTURE R ≥ 35 N/mm ² BREAKING STRENGTH S ≥ 1300 N	R>50 N/mm ² S>2500 N	
	SCRATCH RESISTANCE	ISO 10545-7	0 - V	IV	
	LINEAR THERMAL EXPANSION	ISO 10545-8	≤ 9x10 ⁻⁵ °C ⁻¹	6x10 ⁻⁵ °C ⁻¹	
	THERMAL SHOCK RESISTANCE	ISO 10545-9	Resistant	Resistant	
	FROST RESISTANCE	ISO 10545-12	Resistant	Resistant	
	ACID AND ALKALI RESISTANCE	ISO 10545-13	CLASS GB MIN.	Low concentr. GLA High concentr. GHA	
	CHEMICAL RESISTANCE	ISO 10545-13	CLASS GB MIN.	GA	
	STAIN RESISTANCE	ISO 10545-14	CLASS 3 MIN.	5	
	FRICTION COEFFICIENT (SLIPPERINESS)	BCR - Italia DM del 14-06-89		ASTM - USA ASTM C1028	DIN - Germania DIN 51130
		Dry rubber 0,62	Wet rubber 0,51	Dry leather 0,62	Dry neolythe 0,69

THE PRODUCTS HAVING AN ABSORPTION < 0,5% ARE CLASSIFIED ACCORDING TO THE UNI CEN STANDARDS "FULLY VITRIFIED TILES" AND ACCORDING TO THE ASTM STANDARDS "IMPERVIOUS TILES"

**1/2 BROKEN JOINT NOT RECOMMENDED.
MANUFACTURE RECOMMENDS 1/3 OR LESS STAGGERED SPACING**

DIGITAL INK-JET TILE

IMPORTANT
Please note that fixing in a 50% staggered configuration is not recommended. We suggest the following fixing configurations for these ceramic materials.

YES 15%

NO 50%

HF **HAPPY FLOORS**
www.happy-floors.com

I-Design
Collection



SONOMA
FULL BODY PORCELAIN





WIND



VALLEY



SKY



Wind 12"x24"



Wind 20"x20"



Mosaic Wind 2"x2"
(12x12 sheet)



Valley 12"x24"



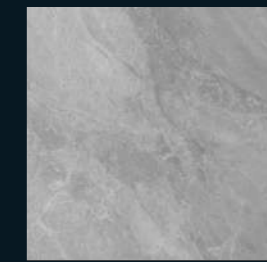
Valley 20"x20"



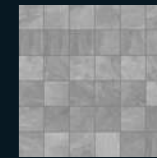
Mosaic Valley 2"x2"
(12x12 sheet)



Sky 12"x24"



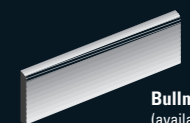
Sky 20"x20"



Mosaic Sky 2"x2"
(12x12 sheet)

Universal Metal Pencil 0,6"x12"

Universal Metal Corner 0,6"x0,6"



Bullnose 3"x12"
(available in all colors)

1/2 BROKEN JOINT NOT RECOMMENDED.
MANUFACTURE RECOMMENDS 1/3 OR LESS STAGGERED SPACING

IMPORTANT
Please note that fixing in a 50% staggered configuration is not recommended. We suggest the following fixing configurations for these ceramic materials:

